

FISHWAY STATUS REPORT

Date: 5/9/2011
 Inspection Period: 5/1 - 5/7/2011

THE DALLES DAM



**US Army Corps
of Engineers**
Portland District

The Dalles Project-Fisheries
 P.O. Box 564
 The Dalles, OR 97058-9998
 Phone: 541-506-3800

Fishways are inspected twice daily. Additional daily monitoring done via automation system in fisheries office.

The Dalles Dam	Inspections	Criteria	Total Number of Inspections:		Temperature:	#DIV/0!	F
	Out of Criteria	Limit	Comments		Secchi:	3.0	Ft.
NORTH FISHWAY							
Exit differential	0	≤ 0.5'					
Count station differential	0	≤ 0.3'	Count station window cleaned 5/2.				
Weir crest depth	0	1.0' ± 0.1'					
Entrance differential	0	1.0' - 2.0'	Average	1.4	Daily differentials & weir depths, see AVGS tab.		
Entrance weir N1	0	depth (≥ 8')	Average	10.0			
Entrance weir N2		Closed	Bulkhead installed				
PUD Intake differential	0	≤ 0.5'					
EAST FISHWAY							
Exit differential	0	≤ 0.5'					
Removable weirs 154-157	0	Per forebay	Auto adjusts 1' increments.				
Weir 158-159 differential	0	1.0' ± 0.1'					
Count station differential	0	≤ 0.3'	Count station window cleaned 5/2; picket leads raked 5/2 and 5/7.				
Weir crest depth	0	1.0' ± 0.1'					
Junction pool weir JP6	0	depth (≥ 7')	Average	9.2	Manually adjusted as needed.		
East entrance differential	0	1.0' - 2.0'	Average	1.6	Daily differentials & weir depths, see AVGS tab.		
Entrance weir E1	0	No criteria	Average	10.8	Manually adjusted.		
Entrance weir E2	0	depth (≥ 8')	Average	10.4			
Entrance weir E3	0	depth (≥ 8')	Average	10.0			
Collection channel velocity	0	1.5 - 4 fps	Average	2.7	See Velocities tab for more complete information.		
West entrance differential	0	1.0' - 2.0'	Average	1.5			
Entrance weir W1	0	depth (≥ 8')	Average	10.4			
Entrance weir W2	0	depth (≥ 8')	Average	10.4			
Entrance weir W3	0	No criteria	Average	Closed			
South entrance differential	0	1.0' - 2.0'	Average	1.3	Daily differentials & weir depths, see AVGS tab.		
Entrance weir S1	0	depth (≥ 8')	Average	8.5	Manually adjusted.		
Entrance weir S2	0	depth (≥ 8')	Average	8.4			
JUVENILE PASSAGE							
Sluiceway operation	0	units 1,5,18					
Turbine trashrack drawdown	0	<1.5', wkly	Range:	0.0' - 0.4'			
% Spill	0	40%, 24hr	Average	39.9			
Spill Pattern	0	per FPP					
Turbine Unit Priority	1	per FPP	Main unit 9 OOS for maintenance purposes 5/4 pm.				
Turbine 1% Efficiency	0	per FPP					

OTHER ISSUES:**THE DALLES*****Birds:***

Gull numbers have increased from last weeks report downstream of the bridge. USDA gull hazing contract started and hazer's are working by boat just downstream of The Dalles bridge daylight to dusk. Please see avian distribution tab for numbers, species, and location. Also note the new avian deterrent lines added for 2011.

Pikeminnow:

WDFW dam anglers on site. Catch rate ~20 pikeminnow per day. Collecting regurgitated juvenile lamprey for Uofl research project.

Operations:

Gatewell drawdown was completed and 5/7. All differentials were within criteria. Calibration check completed 5/4. All within criteria limit of +0.3' Daily monitoring completed via automation system in fisheries office for the entire week from 1700 hrs. to 0630 hrs. indicated that all fishladder entrances remained in criteria.

Project Fisheries met with Oregon Department of Fish and Wildlife personnel 5/5 to discuss pre-work safety meeting requirements for access, final paperwork, and toured the project's forebay and tailrace areas accessible for bass dam angling predation study.

Spring Chinook passage numbers increasing after a slow start. All fishways maintaining full criteria operation.

Maintenance:

Battelle's transducer failed on spillway pier nose between 9 and 10. The trolley pipe was no longer usable due to damage by a log. TDS provided support to install shallow pipes in its place to maintain data collection. Two pipes were installed properly and the hydrophones are working well and collecting data. A special thanks to the TDS crew for making this happen on such a short notice.

Unit 8 scheduled for annual maintenance week of 5/16. Sluiceway open chaingate over 8 to be moved to unit 7 during that time.

Studies:

The Dalles east fishladder auxiliary water system emergency operation backup special FFDRWG meeting to occur 5/9.

Three gates were pulled from the fishlock approach channel and were inspected 5/4 as part of TDA east fishladder AWS backup system.

Research/Contractors:

Fisheries Field Unit (FFU) conducting avian observations.

Battelle/Pacific Northwest National Laboratory (PNNL) juvenile salmonid acoustic telemetry (JSAT) tag research underway.

Oregon Department of Fish and Wildlife (ODFW) captured via electro shocking, tagged northern Pikeminnow and collected biological data from northern Pikeminnow, smallmouth bass, and walleye as part of the ODFW Northern Pikeminnow Management Program. Sampling this week along the Oregon shore up to 300' from the east fishway exit and along the Washington shore to the navigation lock. Sampling took place between the the hours of 1800 - 2400 hrs.

WDFW fish counters started Apr1.

Washington Department of Fish and Wildlife (WDFW) Pikeminnow dam angling underway. Pikeminnow regurgitated juvenile lamprey are being collected for the University of Idaho.

People's Utility District (PUD) juvenile sampling underway.

US Department of Agriculture (USDA) bird hazing started mid April.

US Fish and Wildlife Service (USFW) have installed mounting hardware at the fish count stations, behind the picket leads in the north and east fishways. Camera installation will occur just prior to lamprey passage and monitoring lamprey passage from 6/1 through 10/30.

The Yakama Nation will be collecting six to ten sturgeon brood stock beginning in mid-May, pending approvals.

University of Idaho plan to monitor passage events of PIT-tagged lamprey released downstream of Bonneville Dam. This activity will include frequent downloading and maintenance of HD PIT interrogators.

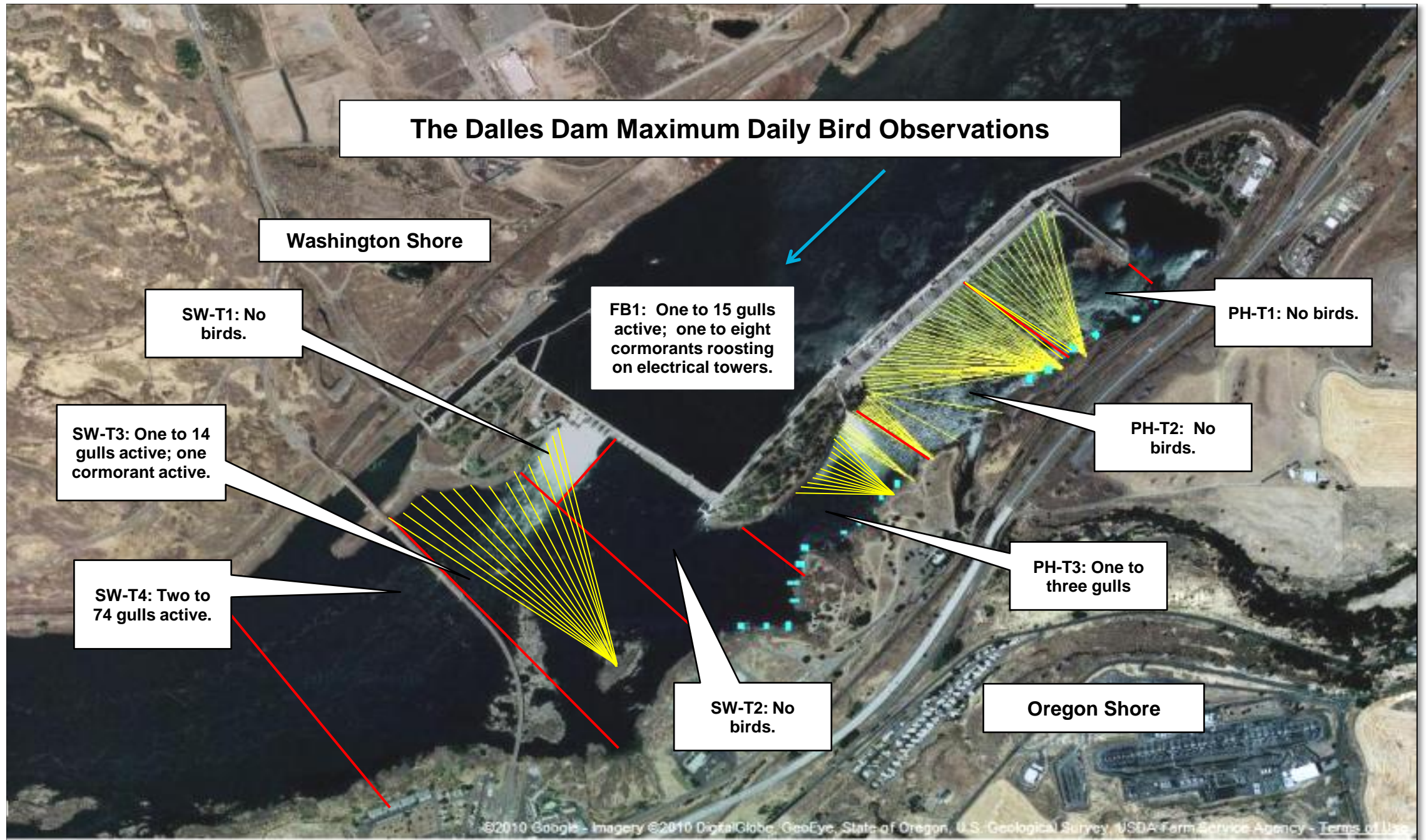
Approved by;

Ron D. Twiner
Operation Project Manager
The Dalles Dam

The Dalles Dam Fish Counts

Date	East Chinook Adult	North Chinook Adult	East Chinook Jack	North Chinook Jack	Total East Sthd	Total North Sthd	East Wild Sthd	North Wild Sthd	East Sock	North Sock	East Coho	North Coho	East Coho Jack	North Coho Jack	East Lamprey	North Lamprey	Spill Volume
1-May	4390	845	68	4	10	0	4	0	0	0	0	0	0	0	0	0	119.0
2-May	5676	1302	121	0	21	0	10	0	0	0	0	0	0	0	0	0	124.1
3-May	8531	1826	330	5	17	2	7	2	0	0	0	0	0	0	0	0	107.7
4-May	5390	1232	305	0	12	0	8	0	0	0	0	0	0	0	0	0	106.3
5-May	5804	1690	371	13	18	0	7	0	0	0	0	0	0	0	0	0	99.5
6-May	5521	972	430	12	10	1	5	0	0	0	0	0	0	0	0	0	113.2
7-May	4625	1554	508	22	21	2	4	1	0	0	0	0	0	0	0	0	101.0
Wkly Tot	39937	9421	2133	56	109	5	45	3	0	0	0	0	0	0	0	0	
% Split	80.9%	19.1%	97.4%	2.6%	95.6%	4.4%	93.8%	6.3%	#DIV/0!	#DIV/0!	#DIV/0!	#DIV/0!	#DIV/0!	#DIV/0!	#DIV/0!	#DIV/0!	

Spill range: 99.5 to 124.1 KCFS

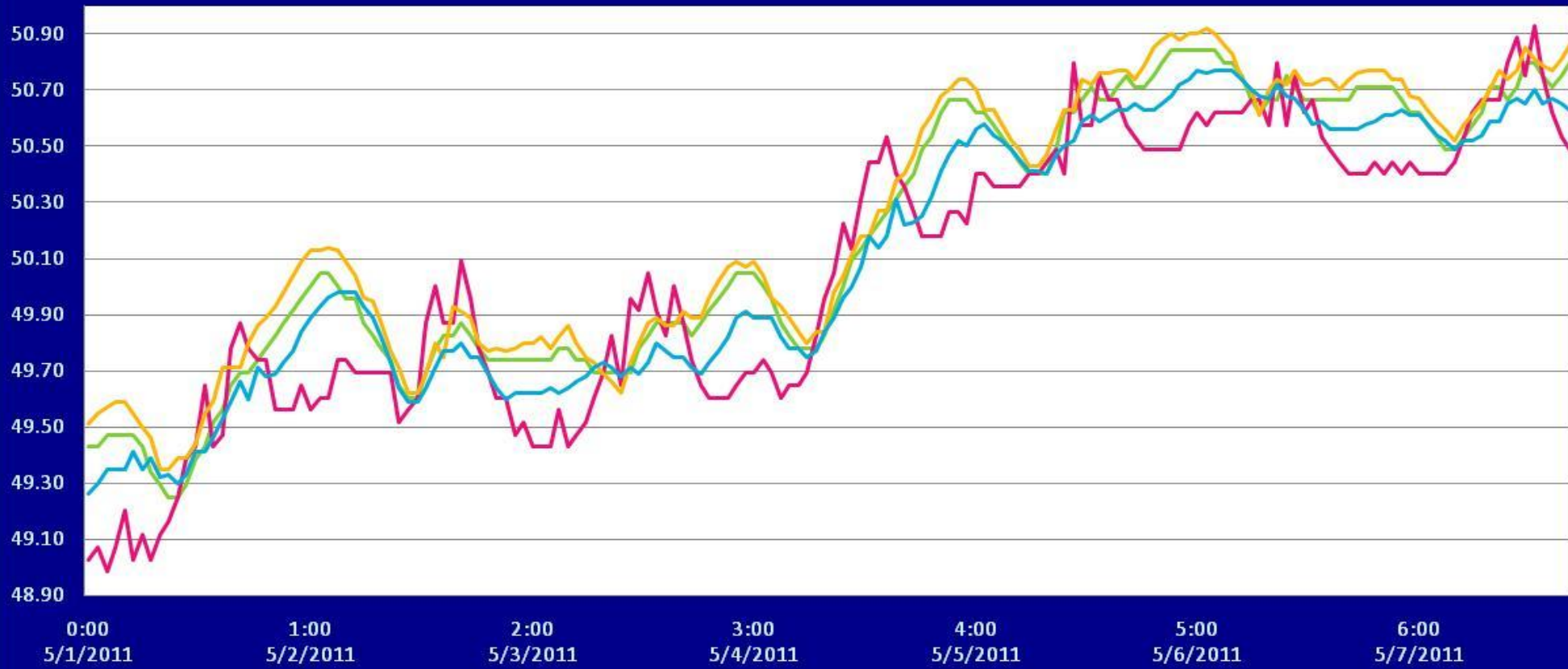


Yellow line indicate locations of avian lines.
 Red lines indicate zones of observation.
 Blue rectangles represent tribal fishing platforms.

The Dalles River/Water Temperatures

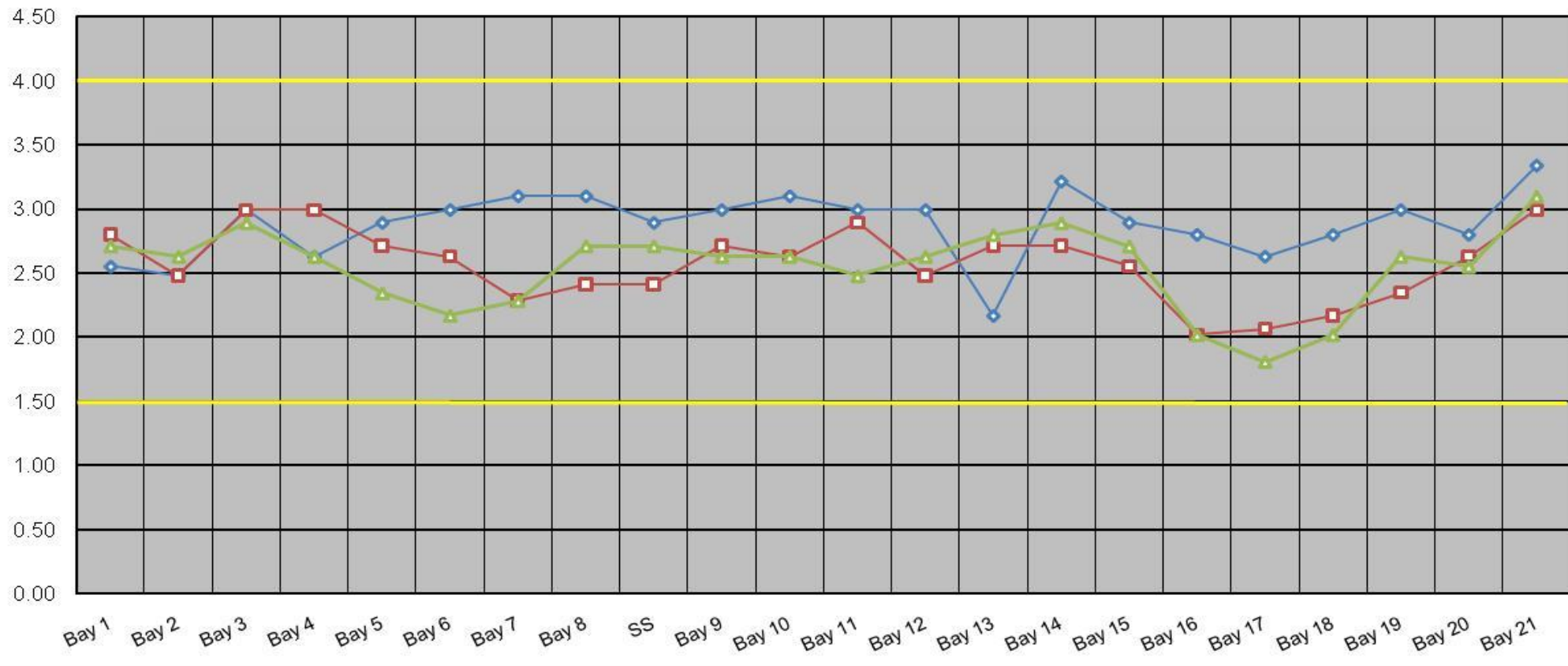
Deg F

- East Fish Ladder
- North Fish Ladder
- USGS Forebay
- USGS Tailwater



The Dalles Dam Collection Channel Velocities (fps)

5/4/2011 5/5/2011 5/6/2011



Temp:		SUN	3.0
		MON	3.0
		TUES	3.5
		WED	3.3
		THUR	3.0
		FRI	3.0
		SAT	2.5
AVG:	#DIV/0!	AVG:	3.0

The Dalles Dam Daily Readings and Averages for
Temperatures, Secchi, Entrances, and Spill

North Fish Ladder			East Fish Ladder												
North Entrance			East Entrance					West Entrance				South Entrance			
Date:	Differential	N1 Depth	Differential	E1Depth	E2 Depth	E3 Depth	JP 6	Differential	W1Depth	W2 Depth	W3 Depth	Differential	S1 Depth	S2 Depth	% Spill
1-May-11	1.3	10.0	1.8	10.0	10.0	10.0	9.9	1.7	10.2	10.2		1.3	8.4	8.4	40.1
1-May-11	1.3	10.1	1.8	10.3	10.4	2.0	9.4	1.7	10.5	10.5		1.4	8.2	8.2	39.9
1-May-11			1.8	10.0	10.0	10.0		2.0	8.9	8.9		1.5	8.2	8.2	
2-May-11	1.3	10.0	1.7	10.4	10.5	10.4	9.5	1.6	10.6	10.6		1.3	8.5	8.4	39.9
2-May-11	1.3	10.0	1.5	12.1	11.0	11.0	10.1	1.4	11.7	11.6		1.4	8.3	8.2	39.9
2-May-11			1.5	10.6	10.5	10.6		1.4	11.0	11.0		1.4	8.3	8.2	
3-May-11	1.4	9.9	1.6	10.0	10.4	10.5	9.5	1.6	10.5	10.6		1.4	8.3	8.3	39.9
3-May-11	1.4	10.0	1.6	11.5	10.5	10.5	9.7	1.5	11.0	11.1		1.3	8.4	8.3	39.6
3-May-11			1.3	12.0	11.0	11.0		1.2	11.3	11.0		1.3	8.3	8.3	
4-May-11	1.4	10.0	1.6	11.4	10.4	10.4	10	1.6	11.1	11.1		1.4	8.4	8.4	39.2
4-May-11	1.3	10.1	1.6	11.6	10.4	10.4	8.7	1.5	10.9	10.9		1.4	8.2	8.2	40.3
4-May-11			1.5	11.5	10.6	10.6		1.4	11.0	11.0		1.3	8.4	8.4	
5-May-11	1.4	10.2	1.7	9.7	9.9	10.0		1.6	9.6	9.7		1.3	9.4	8.8	40.1
5-May-11	1.4	10.1	1.6	11.4	9.9	10.1		1.6	10.2	10.1		1.3	8.6	8.5	40.8
5-May-11			1.4	10.6	10.6	10.6		1.2	11.6	11.6		1.0	9.6	9.2	
6-May-11	1.4	10.1	1.5	11.4	10.0	10.1	7.7	1.6	10.1	10.0		1.4	8.6	8.5	40.0
6-May-11	1.3	10.1	1.6	11.5	10.1	10.1	8.8	1.6	10.1	10.1		1.2	8.6	8.6	40.4
6-May-11			1.5	11.5	10.1	10.0		1.4	10.2	10.1		1.2	8.5	8.5	
7-May-11	1.3	10.1	1.5	9.1	10.1	10.2	7.5	1.7	8.9	8.9		1.4	8.2	8.1	39.4
7-May-11	1.4	9.9	1.7	9.5	10.9	11.0	9.9	1.8	9.9	10.0		1.5	8.1	8.1	39.6
7-May-11			1.4	10.0	10.1	10.2		1.4	9.4	9.6		1.3	8.3	8.2	
AVG:	1.4	10.0	1.6	10.8	10.4	10.0	9.2	1.5	10.4	10.4	Closed	1.3	8.5	8.4	39.9

Third fish way inspection for east fish ladder, east, west, and south entrances completed via automation system in fisheries office.



Battelle's transducer failed on spillway pier nose between 9 and 10; TDS installed shallow pipes with hydrophones in place to maintain data collection.